

Status of Metering of IP Sets and BJ/KJ on March, 2008

Sl.No.		IP installations			BJ/KJ installations		
		Total	Metered	Metered (%)	Total	Metered	Metered (%)
1	BESCOM	552221	46392	8.40	610409	346460	56.76
2	GESCOM	241846	31968	13.22	439162	257577	58.65
3	HESCOM	492731	147283	29.89	595659	439079	73.71
4	MESCOM	183601	168392	91.72	131448	100354	76.35
5	CESC	185977	38896	20.91	300278	294912	98.21
6	HUKKERI	17683	5676	32.10	-	-	-
	TOTAL	1674059	438607	26.20	2076956	1438382	69.25

Carbon Emission through Conventional Generation in the state

Emission (Million t-CO ₂)				
	2006-07	2008-09	2009-10*	2010-11*
State Coal	10.92	14.63	16.49	20.21
State Diesel	0.54	0.54	0.54	0.54
Private Coal	1.18	1.18	3.92	8.54
Private Gas	0.78	0.78	0.78	0.78
Private Diesel	0.50	0.50	0.50	0.5
Total	13.92	17.63	22.23	30.57

* Calculated on the basis of installed capacity expected in the state in coming years and current grid emission of various technologies

The Industries with large no. of factories in Karnataka (2004-05) (1/2)

Industries with no. of factories registered (nos)			
50-300	300-500	500-1000	1000+
(21) Manufacture of Paper & Paper products (245) (BM) & Water recycling	(17) Manufacture of Cotton Textiles (334) (COGEN)	(18) Manufacture of wool, Silk, Synthetic Fibre, Textiles (884) (Process heat / steam)	(15) Manufacture of Food products & beverages (1978) (BM)
(32) Manufacture Radio, Television & Communication equipment & apparatus (286)	(25) Manufacture Rubber, Plastic, Petroleum & Coal products (444) (Solid waste recycling)	(24) Manufacture Chemicals & Chemical products (except products of petroleum & coal) (583) (Process heat / steam)	
(20) Manufacture of Wood & wood products, Furnitures & Fixtures (170) (Solid Waste recycling)	(31) Manufacturing of Electrical, machinery & apparatus NEC (392)	(29) Manufacture of machinery, Machine tools & parts except electrical machinery (573)	(28) Manufacture of Metal products & parts except machinery & transport equipments (1209) (SWR)
(33) Manufacture of Medical precision & optical instruments, watches and clocks (134)	(50) Sale maintenance & Repairs of motor vehicles, motor cycles, retail sale of automotive (416)	(26) Manufacture of Non-metallc mineral products (572)	

The Industries with large no. of factories in Karnataka (2004-05) (2/2)

Industries with no. of factories registered (nos)			
50-300	300-500	500-1000	1000+
(34) Manufacture of Motor vehicles, Trailers & Semi-trailers (121)	(14) Cotton ginning, Cleaning & baling (387) (EC)		
(36) Manufacture of Furniture, Manufacturing NEC (112)	(27) Basic metal & Alloy industries (331) (Heat recovery & conservation)		
(16) Manufacture of Beverages, Tobacco & Tobacco products (59) Solar air drying			
(19) Manufacture of Textile products (including wiring apparel other than footwear) (54)EC,SWR,Process heat / steam			
EC- Energy Conservation; BM - Bio Methanation ; SWR - Solid Waste Recycling Note : Prefix no in bracket shows the NIC number for Industry groups and numbers in braket after the industry name indicates number of factories under that particular industry (NIC group, 1998); in 2004-05. in the cell, the text in bold indicates the name of the clean energy technological solution that can be implemented into the category			

Vehicular Growth in Karnataka since 1991 to 2008 (lakhs Units)

Sl.No.	Year	Vehicles
1	1991	14.33
2	1992	15.83
3	1993	17.19
4	1994	18.76
5	1995	20.15
6	1996	22.5
7	1997	25.35
8	1998	28.05
9	1999	30.67

Sl.No.	Year	Vehicles
10	2000	33.52
11	2001	36.92
12	2002	39.96
13	2003	44.83
14	2004	48.75
15	2005	54.35
16	2006	62.2
17	2007	69.4
18	2008	75.19

Consumption (thousand tones) of major petroleum products by state (Public sector unit scale only) : Karnataka

Year	Nap thane	LPG	Petrol	SKO	ATF	HSD	LDO	FO	LSHS / HHS	Lubes / Greases	Bitumen	Others	Total
2001-02	371	415	482	525	91	2167	34	525	154	33		34	4831
2003-04	303	547	502	483	118	2372	47	493	87	35	195	22	5204
2004-05	262	629	506	472	148	2433	51	549	66	37	212	23	5388
2005-06	213	653	514	471	199	2388	41	517	25	36	282	30	5369

ATF : Aviation Turbine Fuel
 SKO : Superior Kerosine Oil
 HSD : High Speed Diesel
 LDO : Light Deisel Oil
 FO : Furnace Oil
 LSHS / HHS : Low Sulpher Heavy Stock / Hot Heavy Stock

Season-Wise Agricultural Crops recommended for different Agro-climatic Zones of Karnataka (1/2)

Zone No.	Name	Rainfall range (mm)	District (No. of Taluks)	Kharif	Rabi
1	North Eastern Transaction Zone	830-919	Bidar (5) & Gulbarga (2)	Jowar, Blackgram, Greengram, Tur, Bajra, Sunflower, Sesamum, Niger, Paddy, M.Milletts, Sugarcane	Bengalgram, Jowar, Wheat, Sunflower, Safflower, Linseed
2	North Eastern Dry Zone	633-807	Gulbarga (8) & Raichur(3)	Tur, Sunflower, Groundnut, Bajra, Greengram, Blackgram, sesemum, Jowar,Cotton,Sugarcane, Paddy	Bengalgram, Jowar, Wheat, Sunflower, Safflower, Linseed
3	Northern Dry Zone	465-786	Koppal (4), Gadag (4), Dharwad (1), Belgaum (5), Bijapur (5), Bagalkot (6), Bellary (7), Davangere (1), Raichur (2)	Sunflower, Groundnut, Bajra, Greengram, Horsegram, sesamum, Jowar,Paddy, Cowpea, M.Milletts, Cotton, Tur, Castor, Niger, Maize	Bengalgram, Jowar, Wheat, Sunflower, Safflower, Linseed, Cotton
4	Central Dry Zone	456-717	Chitradurga (6), Davangere (3), Tumkur (6), Chikmangalore (1), Hassan (1)	Groundnut, Raagi, Maize, Jowar, Sunflower, Tur, Avare, Paddy, Sesamum, Horsegram, Cotton	Jowar, Sunflower, Horsegram

Season-Wise Agricultural Crops recommended for different Agro-climatic Zones of Karnataka (2/2)

Zone No.	Name	Rainfall range (mm)	District (No. of Taluks)	Kharif	Rabi
5	Eastern Dry Zone	679-889	Bangalore Rural (8), Bangalore Urban (3), Kolar (11), Tumkur (2)	Raagi, Paddy, Avare, Maize, Groundnut, Castro, Niger, Horsegram	Horsegram
6	Southern Dry Zone	671-889	Mysore (4), Chamarajanagara (4), Mandya (7), Tumkur (2), Hassan (2)	Paddy, Raagi, Jowar, Maize, Tur, Horsegram, Cowpea, Avare, Groundnut, Sesamum, Sunflower, Castro, Niger, Cotton, Tobbaco, Sugarcane	Raagi, Maize, Horsegram, Cowpea
7	Southern Transcation Zone	612-1054	Hassan (4), Chikmangalore (1), Shimoga (3), Mysore (3), Davangere (2)	Paddy, Raagi, Jowar, Maize, Tur, Horsegram, Cowpea, Avare,Groundnut, Sesamum, Sunflower, Castro, Niger, Cotton, Tobbaco, Sugarcane	Raagi, Horsegram, Paddy, Sunflower, Bengalgram
8	Northern Transaction Zone	618-1303	Belgaum (4), Dharwad (3), Haveri (6), Gadag (1)	Groundnut, Jowar, Maize, Paddy, Cotton, Sugarcane, Tobbaco, Bajra, Tur, Sunflower, Soyabean, Greengram, Horsegram, Avare, M.Millets, Cowpea	Jowar, Wheat, Maize, Sunflower, Bengalgram, Horsegram, Linseed, Safflower

Super Speciality Hospitals

Department for Health & Family Welfare

Nodal Agency: KSIIDC

4 Super Specialty Hospitals in Bangalore Project Brief

Development of four hospitals across Bangalore in DBFOT model

Sites ideally located in 4 Strategic locations of the City

Clear title, prime land on long-term lease

Sponsoring Authority: Dept. of Health & Family Welfare, Govt. of Karnataka

Project Objective

- **Maximizing Coverage:** Provide equitable access to affordable, quality healthcare to all
- **Sustainability:** Sustainable model – For Govt. & Private Developer
- **Optimizing Income for Developer:** Provide scope for economic returns to the Pvt. Service Provider

Site Details

Location	Land Detail	Permissible FAR
Indiranagar	5 -7 acres (Approx) of prime land with an existing 250 bed hospital (presently under construction), adjacent to SV Road Metro Station	2.25*
Kacharakannahalli HRBR Layout	5 -10 acres (Approx) of prime land located in North Bangalore	2.25
Sumanahalli junction	5 -10 acres (Approx) of prime land located in the premises of Beggars Rehabilitation Centre , has direct connectivity to International Airport	2.25**
Banashankari 6th Stage	5 acres (Approx) of land located within BDA layout in proximity to Bangalore – Mysore expressway link road and Outer ring road	2.25

*FSI 4 for lands within 150 mts from Metro Station

**FSI 3.25 for lands on Mutation Corridor

1. Indiranagar



2. HRBR Layout



3. Sumanahalli junction



4. Banshankhari 6th Stage



4 Super Specialty Hospitals

- PPP Structure
 - Design-Finance-Build-Operate-Transfer (DFBOT)
 - Concession Period – Initially 30 Years
- Investment Details
 - Approx. 120 Crores Each
- Current Status
 - Project Approved by Government of Karnataka

4 Super Specialty Hospitals

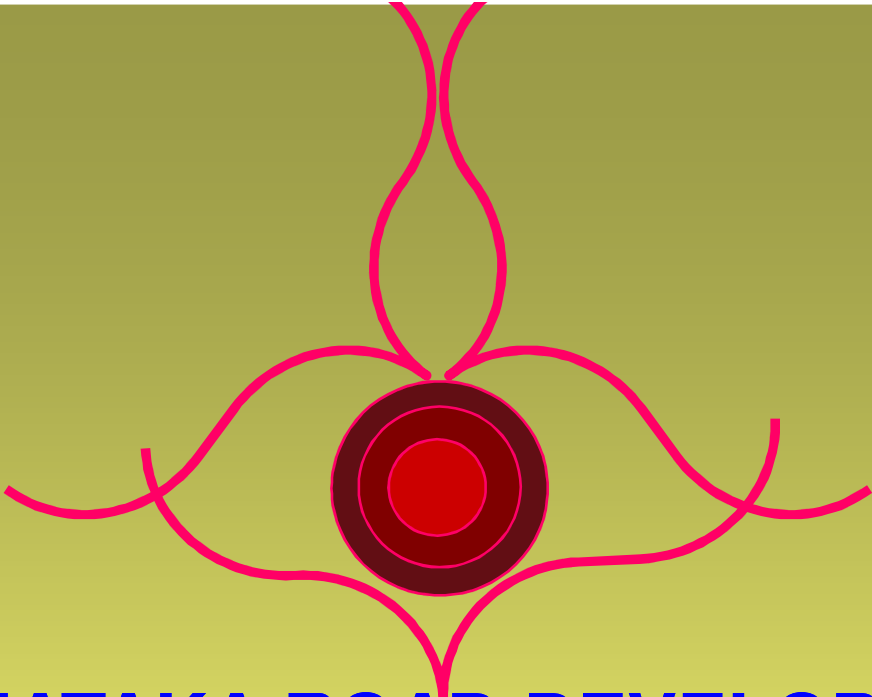
- ▶ Tender Process
 - Process- Two Stage Bid Process (RFQ + RFP)
 - Last date for submission of applications for RFP – 26/08/2010

- ▶ Project Details Available at
 - Website: www.ksiidc.com, www.iidcindia.co.in, www.ilfsindia.com

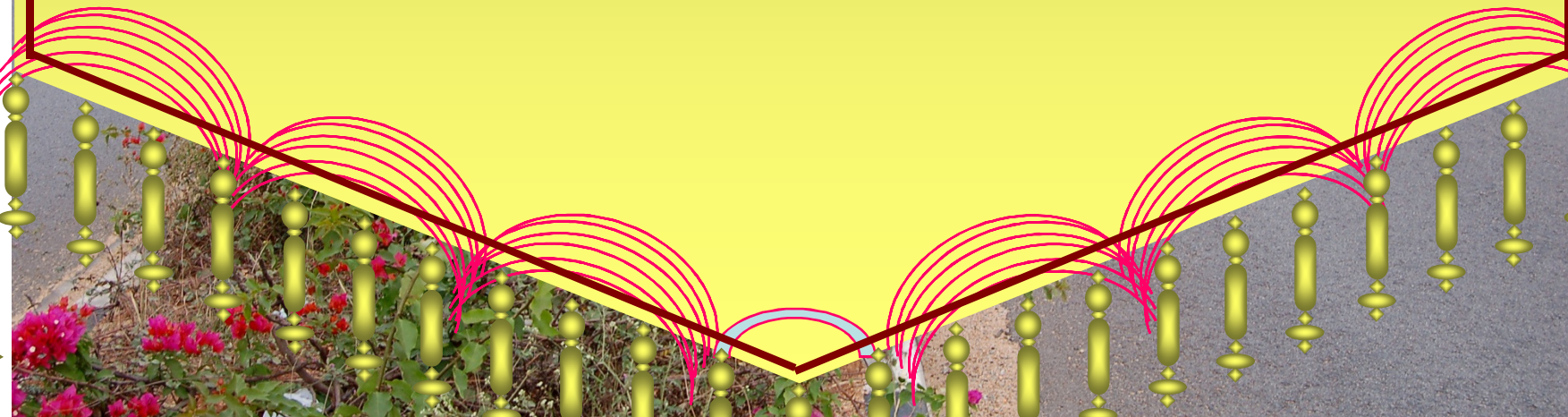
- ▶ Contact Details
 - Vishal Salgaonkar,
 - Senior Manager,
 - IL&FS Infrastructure Development Corporation Ltd,
 - Al-Latheef, 1st Floor, # 2, Union Street,
 - Off Infantry Road, Bangalore 560 001
 - Ph: +91-80-40343326
 - Fax: +91-80-40343310

Road Projects

Karnataka Road Development Corporation Ltd



**KARNATAKA ROAD DEVELOPMENT
CORPORATION LIMITED**



ROADS FOR PROSPERITY

COMPANY PROFILE :

- ❖ **Karnataka Road Development Corporation Ltd. (KRDCL) was incorporated in 1999 as a wholly owned Government of Karnataka Company as per the provisions of the Company Act, 1956.**
- ❖ **KRDCL is a company under the Karnataka Public Works, Ports and Inland Water Transport Department.**
- ❖ **The Company established to promote surface transport infrastructure to improve :**
 - a. Road network by taking up construction of roads,**
 - b. Construction of bridges,**
 - c. Maintenance of roads etc., and**
 - d. To take up road projects on Public Private Partnership (PPP) basis.**
- ❖ **Since inception KRDCL has strived to improve the road network and to establish connectivity to all the nook and corner of the state.**

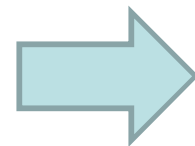
Contn..

BRIEF PROFILE OF PROJECTS :

- ❖ **KRDCL has taken up construction of 1,103 km of roadwork under EPC and BOT model. Out of which, 828km of road has been completed.**
- ❖ **KRDCL has taken up construction of 652 bridges under Phase I, II, III & IV. Out of which 502 bridges are completed and 150 bridges are in various stages of completion.**
- ❖ **Three road projects of 275 kms are being developed under BOT(toll) -VGF model at project cost of Rs.722 crores.**
- ❖ **The Development of State Highways, Major District Roads and village roads are envisaged to be taken up under DBFOT model for a length of 1300 km under Mega Road Development Programme of Karnataka.**
- ❖ **KRDCL is implementing deposit contribution works to the tune of Rs. 80.00 crore of B-TRAC 2010 Project, Tourism department works, Basavakalyan Development Authority roads and Urban Development Department roads.**

BRIDGE PROJECTS :

NAME OF THE PROJECT	NUMBER OF BRIDGE	COST (RS.CRORES)
Construction of bridges under Phase- I	147	110
Construction of bridges under Phase- II	253	241
Construction of bridges under PHASE- III	174	220
Construction of bridges under PHASE- IV	79	97



DEPOSIT CONTRIBUTION WORKS

Sl. No	Name of work	length (km)	AMOUNT (Rs. In Crores)
1	Construction of Compound Wall (pre-cast RCC Panels, Columns and Barbed wire fence) and Construction of Approach road in KSIIDC property at Devanahalli Taluk, Adjacent to International Airport, Bangalore	6.5	2.79
2	Improvements to road from Sampekatte to Kattinahole	6.5	8.02
3	Improvements to Kattinahole to Kodachadri	8.17	8.97
4	Improvements to Kaddirampura to Hampi	4.15	3.10
5	Improvements to road from S.V.P circle to Ram Mandir via Rashtrapathi circle on to Hirapur cross (5.075 km) in Gulbarga city.	5.75	24.89
6	Improvements to road from Jagat circle to Mahbus - Masjid junction and Humnabad base junction to Ring road (3.30 kms) in Gulbarga city	3.3	14.35
7	Bangalore Traffic improvement programme (BTRAC-2010)		350.00

Road Projects on Annuity

Karnataka State Highway Improvement Project
(Funded by World Bank)

BOT (annuity) CONTRACTS

Package No	Name of Road	Length in Kms	Total Project cost in RS Crores	Concession Period including construction (construction Period in months) Years
WAP1	(SH33 & SH3) from Malavalli to Pavagada	190.356	559.75	10 years (30 months)
WAP2	(SH18) from Mudhol to Maharashtra Border	107.937	317.60	10 years (24 months)
WAP3	Shikaripura to Anandapuram (NH-206) and Shimoga to Hangal	153.667	397.44	10 years (30 months)
WAP4	(SH61) from Managuli to Devapur on BOT (Annuity)	109.953	248.08	10 years (24 months)
	TOTAL			

BOT (annuity) CONTRACTS

PROCUREMENT ACTIVITIES

- ❖ Procurement of Concessionaire in Two stages
 - Stage -1 Pre Qualification of entity / Joint Venture
 - Stage -2 Financial Bidding among pre-qualified

- ❖ Procurement of Transaction Advisor (TA)

- ❖ Procurement of Independent Engineer (IE)

BOT (annuity) CONTRACTS

- Preparation of Bidding Documents
 - ❖ For Procurement of Concessionaire
 - Request for Qualification (RFQ)
 - Request for Proposal (RFP)
 - (Documents under finalisation in consultation with the Bank)**
 - ❖ Transaction Advisor
 - EOI received on 19 July 2010 and short listing under progress
 - RFP submitted to WB for Approval
 - ❖ Independent Engineer
 - Revised TOR under preparation and will be submitted in sept'2010

BOT (annuity) CONTRACTS

ITEMS/ ACTIVITY	WAP1	WAP2	WAP3	WAP4
L and Acquisition	May 2011	March 2011	March 2011	Jan 2011
R & R Impln	Dec 2010	Dec 2010	Dec 2010	Dec 2010
Utility shifting	Dec 2010	Dec 2010	Dec 2010	Dec 2010
Env Clearance	EC obtained	EC obtained	EC obtained	EC obtained
Forest Clearance	Mar 2011	Mar 2011	Mar 2011	NA
RUB /ROB Rly Clearance	Dec 2010	Not Applicable	Not Applicable	Not Applicable
Proof Check of Design of Bridges	NA (no major bridges>200m)	NA (no major bridges>200m)	NA (no major bridges>200m)	NA (no major bridges>200m)
COMMENCEME NT OF WORKS	Dec 2011	Dec 2011	Dec 2011	Dec 2011 

Transport Hubs

KSRTC

IMTC- Subhash Nagar

- Karnataka State Road Transport Corporation (KSRTC) intends to develop Intermodal Transit Centre, on a land area of about 31 acres
- Project to be developed through Public-Private Partnership (the “**PPP**”) on Design, Build, Finance, Operate and Transfer (the “**DBFOT**”) basis.
- Inter-modal Transit Centre would comprise of
 - Bus terminal facilities for KSRTC and BMTC
 - Integration of the bus terminals with the proposed Bangalore Metro rail system
 - Parking facilities
 - Commercial area



IMTC- Subhash Nagar

- PPP Structure
 - Project is developed on long term Design, Build, Finance, Operate and Transfer (DBFOT) on Concession basis (the Project).
- Investment Details
 - Rs 1400 Crore
- Current Status
 - Project cleared by single window agency
 - Successful bidder to obtain the necessary project clearances

IMTC- Subhash Nagar

- Bid Process

- KSRTC invited applications from interested parties on 3rd June 2010 by way of advertisement
- Time schedule is as below

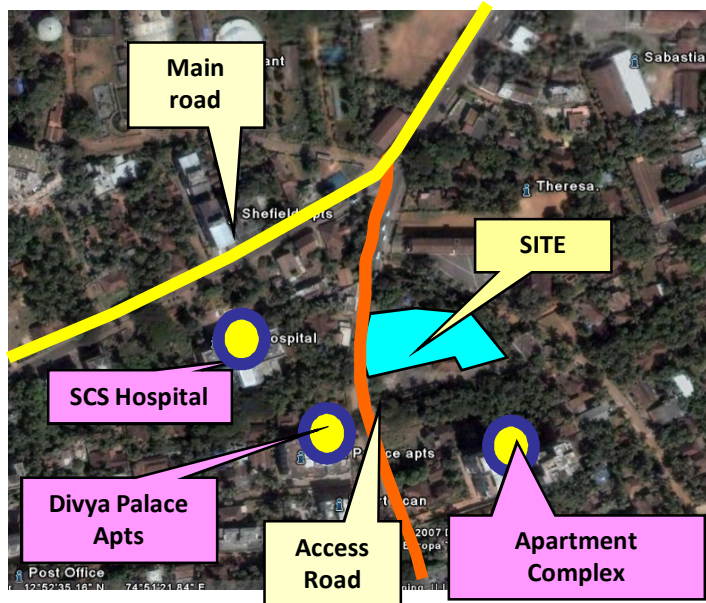
Activities	Date
Last date for receiving queries	14-July-2010
Pre-Application Conference	16-July-2010
Authority response to queries	16-Aug-2010
Application Due Date	22-Sep-2010

IMTC- Subhash Nagar

- Contact Person: Mr Rangaraju (KSRTC)
- E Mail: bpr_139@yahoo.com
- Mobile Number: 7760990205
- Website: www.eproc.karnataka.gov.in

Transport Hub-Mangalore

- ▶ Development of Hotel / Commercial Complex along with KSRTC Guest House on KSRTC site at Mangalore on PPP

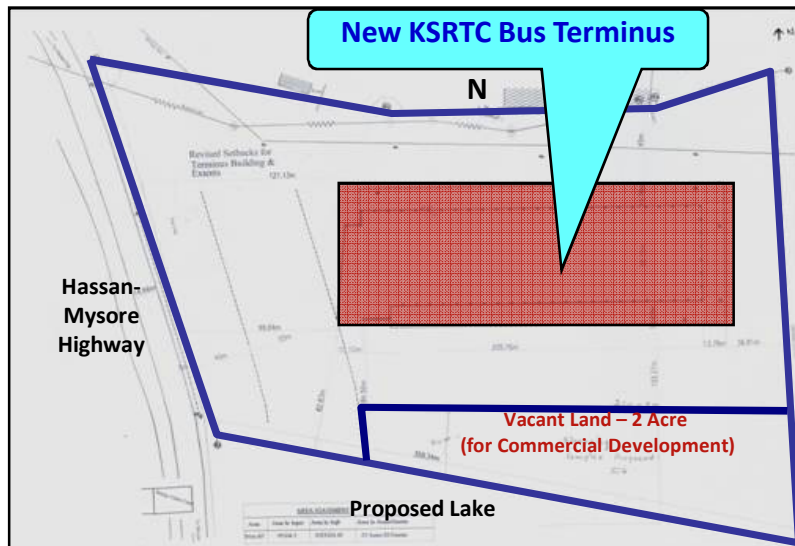


- Location: Bendoor Well, Mangalore
- Area: 1.06 acres
- Project Cost: Rs. 20.7 crores
- Project Influence Area: Mangalore
- Project Benefits: KSRTC Guest House & commercial exploitation of land
- Implementation Agency Name: PPP

Transport Hub- Hassan

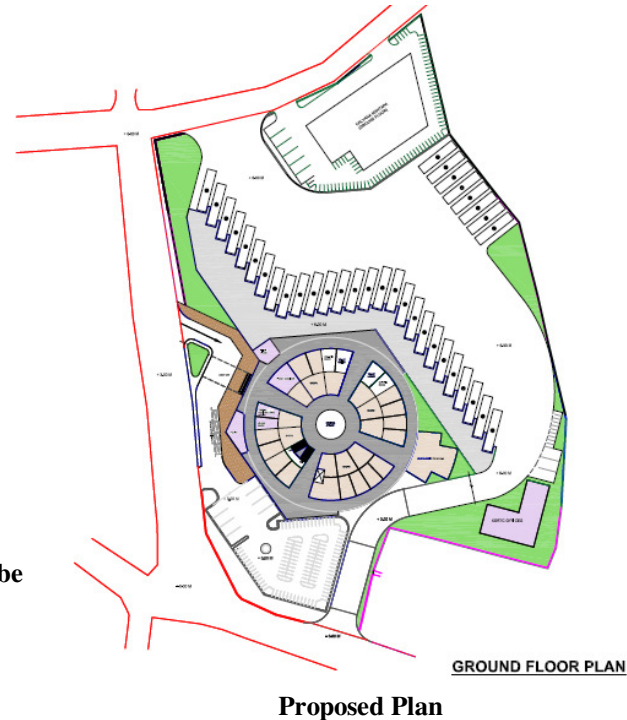
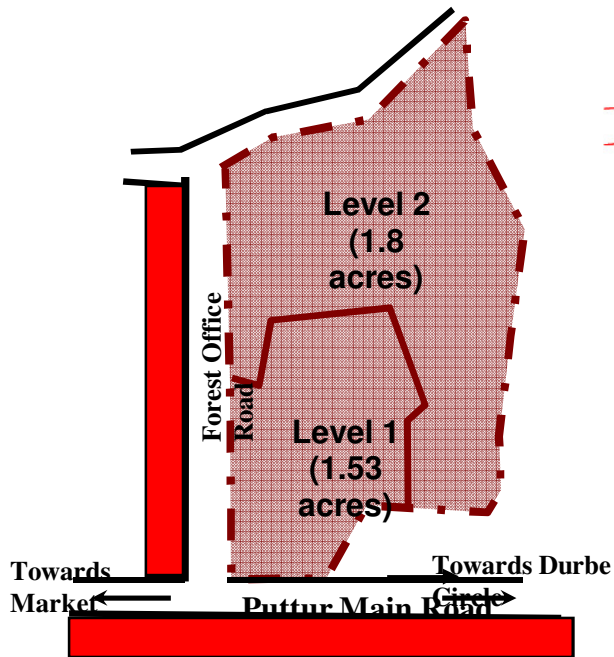
▶ Commercial Development on KSRTC Site at Hassan on PPP

- Location: adjacent to new bus terminal
- Area: 2 acres
- Project Cost: Rs. 32.8 crores
- Project Influence Area: Hassan
- Project Benefits: Passenger amenities & commercial exploitation of land
- Implementation Agency Name: PPP



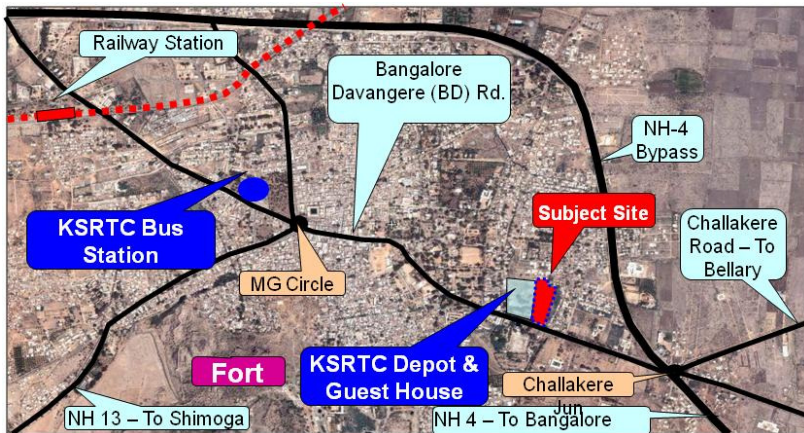
Transport Hub- Puttur

- ▶ Development of Integrated Bus Station and Commercial Complex on KSRTC site at Puttur on PPP
 - Location: Puttur Bus station
 - Area: 2.98 acres
 - Project Cost: Rs. 7.32 crores
 - Project Influence Area: Puttur
 - Project Benefits: KSRTC Bus Station & commercial exploitation of land
 - Implementation Agency Name: PPP



Transport Hub- Chitradurga

- ▶ Development of Commercial Complex along with KSRTC Guest House & Office on KSRTC site at Chitradurga on PPP



Proposed Plan

- Location: BD Road (Old NH-4)
- Area: 3.0 acres
- Project Cost: Rs. 36.8 crores
- Project Influence Area: Chitradurga
- Project Benefits: KSRTC Guest House & Office and commercial exploitation of land
- Implementation Agency Name: PPP

Transport Hubs

- ▶ PPP Structure
 - PPP Type: DBOT
 - Concession Period: 30 years

- ▶ Investment Details
 - Cost: as per project
 - IRR: Over 22.5%

- ▶ Current Status
 - Under Bidding (Last day for submission: 30th August 2010)

Transport Hubs

- ▶ Tender Process
 - Process- single stage (RFP)

- ▶ Project Details Available at
 - Website: www.eproc.karnataka.gov.in

- ▶ Contact Details

The Chief Civil Engineer
Karnataka State Road Transport Corporation (KSRTC),
Central Office, K.H. Road,
Shanthinagar, Bangalore - 560 027
Tel: +91-80-22223027/ 22221321

Transport Hubs

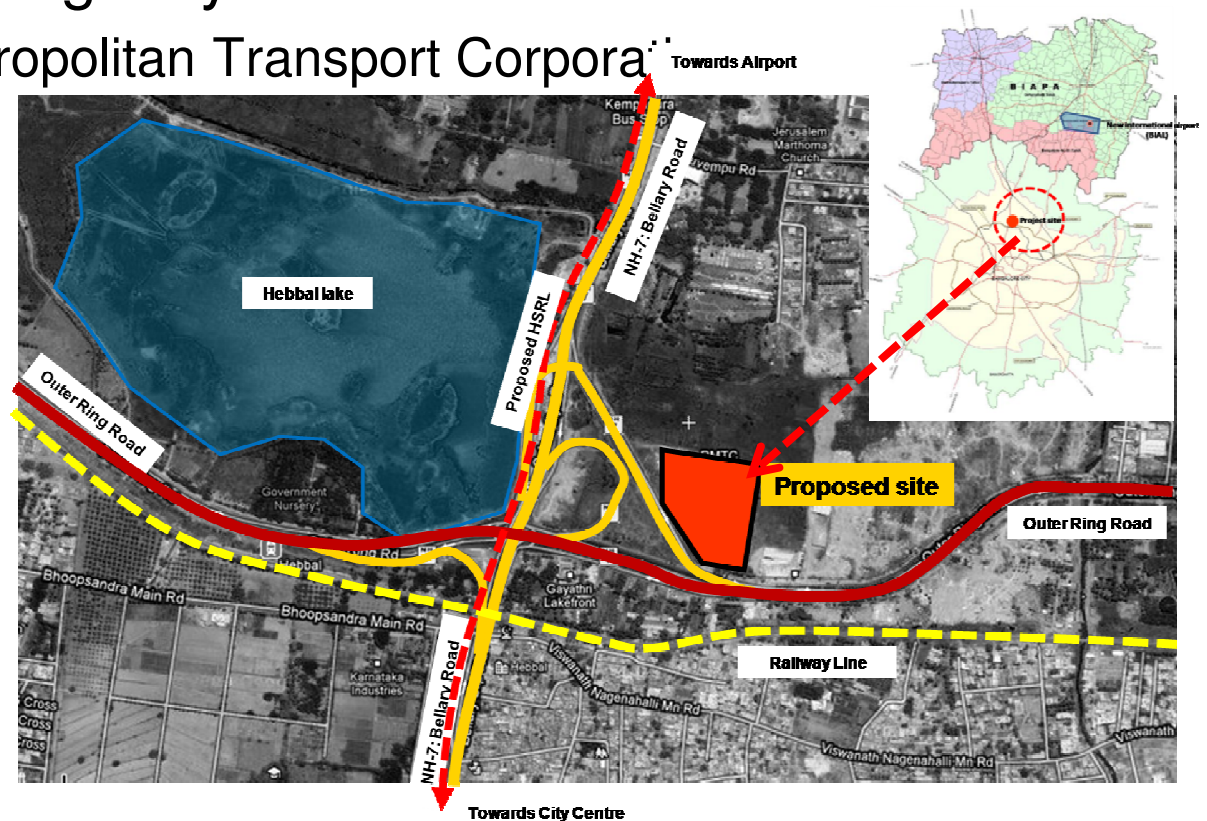
BMTC

Transport Hub- Hebbal

- Project Name: **Development of Traffic & Transit Management Centre (TTMC) at Hebbal, Bangalore on PPP**
- Description: **Envisioned to be a bus terminal/ transportation hub where commuters can interchange between different modes of transportation seamlessly and efficiently through ‘park and ride’ facilities**
- Location: **Hebbal, North Bangalore**
- Area: **7.95 acres**
- Project Cost: **Rs. 300 crores (approx.)**
- Project Influence Area:
- **Entire North Bangalore for Residential**

Transport Hub- Hebbal

- Project Benefits:
 - State of art Bus terminal & ‘park and ride’ facilities
- Implementation Agency Name
 - Bangalore Metropolitan Transport Corporation



Transport Hubs- Hebbal

- ▶ PPP Structure
 - Design, Build, Finance, Operate and Transfer (DBFOT)
 - 30 years (extendable to another 30 years)

- ▶ Investment Details
 - Cost: Rs. 300 Crores
 - IRR: Confidential

- ▶ Current Status
 - Land ownership is with BMTC
 - Land use under Traffic & Transportation (T&T) category

Transport Hub- Hebbal

- ▶ Tender Process
 - Process- Two stage
 - Deadlines-RFQ Application Due Date is 16 August 2010
- ▶ Project Details Available at
 - Website:- www.eproc.karnataka.gov.in
 - Person:-
- ▶ Contact Details
 - **Mr. Veeregowda G N**
 - Chief Traffic Manager (Commercial)
 - Central Offices, Shanthinagar, Bangalore – 560 027
 - Phone: 080-22952504/ 22952583
 - E-mail: ctmcbmtc@gmail.com
 - Website: www.bmtcinfo.com

Transport Hub- Jayanagar

▶ BMTC TTMC, KSRTC Bus Terminal, Depot & Commercial Complex at Jayanagar

- Location: Jayanagar 4th 'T' Block
- Area: 10 acres
- Project Cost: Rs. 306 crores
- Project Influence Area: South Banagalore
- Project Benefits: BMTC TTMC, KSRTC Inter-City Bus Terminal & Depot
- Implementation Agency Name: **BMTC**



Transport Hub-Katriguppe

▶ BMTC TTMC, Depot & Commercial Complex at Kathriguppe



- Location: Kathriguppe Ring Road
- Area: 5.5 acres
- Project Cost: Rs. 144 crores
- Project Influence Area: South-West Banagalore
- Project Benefits: BMTC TTMC & Depot
- Implementation Agency Name: BMTC

Transport Hub- Indira Nagar

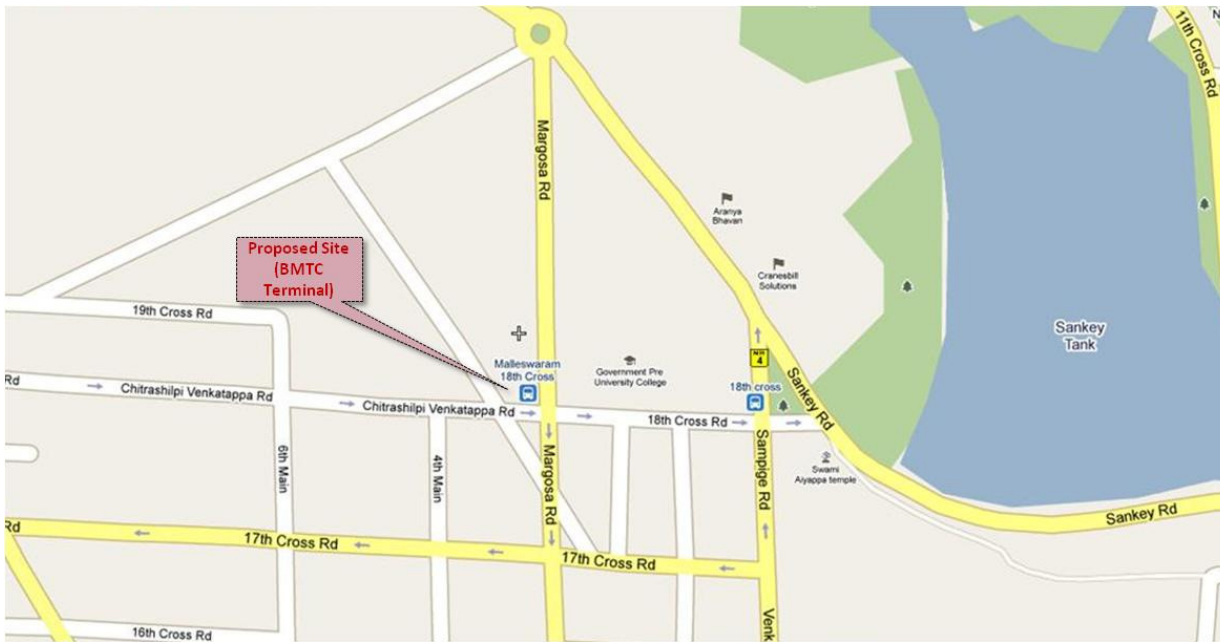
▶ BMTC TTMC & Commercial Complex at Indiranagar



- Location: Indiranagar Old Madras Road
- Area: 2.7 acres
- Project Cost: Rs. 54 crores
- Project Influence Area: East Banagalore
- Project Benefits: BMTC TTMC
- Implementation Agency Name: BMTC

Transport Hub- Malleswaram

▶ BMTC TTMC & Commercial Complex at Malleswaram



- Location: Malleswaram 18th Cross
- Area: 0.325 acres
- Project Cost: Rs. 3 crores
- Project Influence Area: North Banagalore
- Project Benefits: BMTC TTMC
- Implementation Agency Name: BMTC

Transport Hub- BMTC

- ▶ PPP Structure
 - PPP Type: DBOT
 - Concession Period: 30 years

- ▶ Investment Details
 - Cost: as per project
 - IRR: 16-20% (as per project)

- ▶ Current Status
 - Applied for Single Window (SLSWA) Approval
 - To be bid out shortly

Transport Hub- BMTC

- Tender Process
 - Process- two stage (RFQ/RFP)
 - To be announced
- Contact Details
 - Contact Person and Designation:G.N.Veeregowda. Nodal
 - Officer, PPP Cell & Chief Traffic Manager (c), BMTC, Shanthinagar, Bangalore-560 027.
 - Phone : 080-22952504
 - E-mail : ctmcbmtc@gmail.com
 - Website: www.bmtcinfo.com

HIGH SPEED RAIL LINK (HSRL) TO BANGALORE INTERNATIONAL AIRPORT



Nodal Agency: Bangalore Airport Rail Link

HSRL Alignment

Map

DEVANHALLI AIRPORT – 33.296 KM

YELAHANKA – 15.463 KM

HEBBAL – 8.885 KM

MG ROAD CAT – 0.095 KM



Project Details

- Salient Features
 - Distance : 33.65 KM
 - Travel Time: 25 Mins
 - Design Speed: 160 Km/ Hr
 - Operational Speed: 145 Km/Hr
 - No of Stations: 4
 - Check in Facility at CAT and Hebbal Stations
 - Pickup and drop Stations at Yelahanka
 - Airport Terminal Station is at underground
 - Designed Headway- 2 Mins

Project Details

- Project Status:
 - Shortlisted 5 firms
 - M/s Pioneer Infratech Pvt. Ltd. & Siemens Project Ventures
 - M/s Lanco Infratech Ltd. & OHL Concesiones S.L.
 - M/s L&T Transco Ltd.
 - M/s Reliance Infrastructure Ltd. & CSR Nanjing Puzhen Rolling Stock Co. Ltd.
 - M/s ITD-ITD Cem – SOMA Enterprises Joint Venture
 - DPR and Bid Docs approved by GoK
 - VGF Application Submitted to GOI, Awaiting approval
 - Likely Bid due Date: Oct '10

- Contact Details

Sri. C. Jayaram

Director (Projects)

3rd Floor, East Wing, Kanija Bhavan

Race Course Road, Bangalore -1

Telfax. 080 4127 3608

Email : barl.hsrl@gmail.com

Mono Rail

Nodal Agency:
Bangalore Airport Rail Link

Proposed Monorail Corridors

Two corridors namely

1. J.P. Nagar to Hebbal (Bannerghatta road to Kanakapura road, Mysore road, Jnana bharathi, Tumkur road terminates near HSRL hebbal Station) – 31 kms
2. Magadi road Toll gate to proposed peripheral ring road – 9 kms

Schedule of the Project

Procurement of consultants

- RFP for procurement of consultants invited during May ' 2010
- Bid due date 16th Aug 2010
- Submission of DPR – June 2011

Procurement of Concessionaires

- NIT for Bidders (RFQ) – Mar 2011
- Short listing of Bidders – Oct 2011
- Issue of Bid documents – Oct 2011
- Bid due date – Jan 2012
- Financial Close – Sep 2012
- Construction Period – 990 days

IMTC- Hebbal

- Karnataka State Road Transport Corporation (KSRTC) intends to develop Intermodal Transit Centre, on a land area of about 31 acres
- Project to be developed through Public-Private Partnership (the “**PPP**”) on Design, Build, Finance, Operate and Transfer (the “**DBFOT**”) basis.
- Inter-modal Transit Centre would comprise of
 - Bus terminal facilities for KSRTC and BMTC
 - Integration of the bus terminals with the proposed Bangalore Metro rail system
 - Parking facilities
 - Commercial area



IMTC- Hebbal

- PPP Structure
 - Project is developed on long term Design, Build, Finance, Operate and Transfer (DBFOT) on Concession basis (the Project).
- Investment Details
 - Rs 1400 Crore
- Current Status
 - Project cleared by single window agency
 - Successful bidder to obtain the necessary project clearances

IMTC- Hebbal

- Bid Process

- KSRTC invited applications from interested parties on 3rd June 2010 by way of advertisement
- Time schedule is as below

Activities	Date
Last date for receiving queries	14-July-2010
Pre-Application Conference	16-July-2010
Authority response to queries	16-Aug-2010
Application Due Date	22-Sep-2010

IMTC- Hebbal

- Contact Person: Mr Rangaraju (KSRTC)
- E Mail: bpr_139@yahoo.com
- Mobile Number: 7760990205
- Website: www.eproc.karnataka.gov.in

Way forward

- Social in-equity in infrastructure need to be addressed
 - Access and affordability
- A holistic approach for develop and O&M is needed
 - Eg: Logistics infrastructure across the state
- Infra development based on sector policies
 - Capacity in GoK agencies in limited
 - Need for integrated policies
 - Institutional Mechanism for coordination
- Multiple player involved in Urban Infra
 - Central, state, city, private sector
- New infra players required

12/3/2010 Similar to ESCOs in Energy Market : Who can invest in sustainable components and can charge tariffs

COMPLETED ROAD WORKS

Sl. No	Name of work	kms	Amount (Rs. In Crores)
1	Package-BB1 (Bilikere to Bhairya)	40.00	37.79
2	Package-BB2 (Bhairya to Hassan)	44.00	28.53
3	Package-BB 3 (Hassan to Belur)	35.00	23.49
4	Package-JB1 (Jewargi to Moratagi)	36.80	31.89
5	Package-JB2 (Moratagi to Sindhagi)	22.20	20.68
6	Package-JB3 (Sindagi to Devarahippargi)	31.00	34.27
7	Package-JB-4(Devarahippargi to Bijapur)	28.94	29.66
8	State-1: Aland Road Junction to Shahabad road Junction (GRR)	9.90	14.29
9	State-1I: Shahabad Road Junction to Jewargi road Junction (GRR)	4.60	10.98
10	Improvements to Wagdhari-Ribbanpalli Road	4.00	2.51
11	Improvements to Old M. C. Road at Mandya town	7.50	10.15
12	Improvements to approach road to Bridge on Sadalaga Dattawad Road	6.00	1.03
13	4-laning of Bangalore-Mysore road package-1(Bangalore -Maddur)	62.50	22.55
14	4-laning of Bangalore-Mysore road package-2(Maddur-Mysore)	49.00	117.56
15	Improvements to existing 4-lane road in Ramanagara town from Ch 45.4 km to 51.00 and Channapatna town from Ch 59.40 km to 62.30 km of SH-17 (8.3 Km)	8.30	14.85

Cont..

Sl. No	Name of work	kms	Amount (Rs. In Crores)
16	Widening & Strengthening of Wadi-Raichur road from Km 41.00 to Km 88.00 in Karnataka (Yadgir-A.P. Border) (Gulbarga District)	47.00	42.16
17	Widening & Strengthening of existing road from Gadag to Ron (Heritage connectivity Project)	40.60	42.16
18	Widening & Strengthening of existing road from Ron to Badami (Heritage connectivity Project)	31.80	22.40
19	Improvements to Shahapur-Sindagi road Km 40.00 to 45.00 km	5.00	2.88
20	Widening and Improvements of AP Border (Medak)-Ramasamudra road (via Gurumitkal) in Gulbarga district for length of 45.95 km	45.95	57.46
21	Widening and strengthening of Mysore-Bantwal State Highway (SH-88) Package-1 from Km 1.64 to Km 88.30 i.e. from Mysore to Kushalnagar	86.66	137.87
22	Widening & Improvements to SH-8, Channarayapatna to Arakalgud (Km 28.51 to 72.00 km) (excluding Ch39.40 to 40.05 km Km 45.06 to Km 45.57, Km 46.945 to 47.715 Km	46.00	45.22
23	Widening & Improvements to existing road from Yadgir to Shahpur for a length of 34.80 km (Package-II of A.P. Border to Shapur road)	34.80	38.30
24	Construction of Wadi - Raichur road from Wadi to Nalwar village from km 0.00 to km 15.00	15.00	17.79
25	Widening & Strengthening of Wadi-Raichur road from Km 0.00 to Km 41.00 in Karnataka (Wadi-Yadgir) (Gulbarga District)	41.00	37.03
26	Construction of Bypass to Holenarasipura	1.02	1.65

DETAILS OF ONGOING MAJOR BRIDGES

SL NO	NAME OF BRIDGE	CONTRACT AMOUNT (RS. IN CRORES)
1	Construction of Grade Separator / Interchange for the junction of 4 lane Bangalore Mysore road and Ring road at Kengeri	25.08
2	Construction of High Level Major Bridge and Road across Maharudrappana Halla in Bagalkot District.	32.94
3	Construction of bridge across Yagachi river near Malliganahalli on MDR in Hassan Tq.	4.19
4	Construction of Bridge at ch.11.00 km of Sagar – Pattaguppa Road in Hosanagar Taluk in Shimoga District	22.74
5	Construction of Bridge at 36.80 Km in Hirisave – Chattahalli road across Hemavathi River in Hassan District	7.50
6	Construction of bridge across Malaprabha River at Km 48.20 near Munavalli on Arabhavi-Challikeri Road in Saudatti Taluk in Belgium District	10.38
7	Construction of bridge at Km 4.32 and Km 4.72 across Ghataprabha river on Ghataprabha Railway Station to Konnur village in Belgaum District	15.99
8	Reconstruction of Bridge at Km 56.50 across Tungabhadra River on Devasugur – Kattagoda State Highway-13 In Raichur District	43.15
9	Construction of Bridge across Krishna River at km 7.40 of Jamkhandi Savalgi road near Jambagi village in Jamkhandi Taluk, Bagalkote District	38.98

DETAILS OF ONGOING ROAD WORKS

Sl. No.	Name of work	Length (km)	Amount (Rs. In Crores)
1	Widening & Improvements to Mysore-Bantwal Road Package-B (SH-88) from Kushalnagar to Sampaje (Km 88.30 to 148.50 km)	60.20.	97.28
2	Widening & Improvements to State Highway SH-8, Channarayapatna to Arakalgud (Km 28.51 to 72.00 km) (excluding Ch39.40 to 40.05 km Km 45.06 to Km 45.57, Km 46.945 to 47.715 Km and some selected reaches under improvement)	46	54.20
3	Widening & Improvements to existing road from Yadgir to Shahpur for a length of 34.80 km (Package-II of A.P. Border to Shapur road)	34.8	56.22
5	Gulbarga Ring Road (2nd Stage) 8 Km	8.00	30.76
6	Widening and Strengthening to Belgaum-Chorla road 50.10 Km	50.1	75.58
7	Construction of Outer Ring Road to Hassan town for 33 Km	33	187.17
8	Construction of Wadi-Raichur road from Wadi to Nalwar village from Km 0.00 to Km 15.00	15	19.30

Cont..

Sl. No.	Name of work	Length (km)	Amount (Rs. In Crores)
9	Improvements to Mysore - Bantwal road from Ch. 148.50 to 220.40 (71.90 km) from Sampaje to Mane (Package -C)	71.9	176.62
10	Construction of 4-lane road from Anubhav Mantap cross road to IB circle from km 2.50 to km 4.30 (1.80 km) at Basavakalyan	1.8	5.64
11	Improvements and Widening of Hubli-Lakshmeshwara Road (Mangasuli-Lakshmeshwar SH-73) in Hubli and Kundagol Taluk of Dharwad and Gadag District Km 0.00 to Km 42.96	43	266.72

ROAD PROJECTS UNDER BOT (TOLL) VGF MODEL

SI. NO.	NAME OF THE PROJECT	LENGTH (IN KM)	AMOUNT (RS. IN CRORES)	REMARKS
1	Improvements to State Highway (SH-10) from Maharastra Border to Andhra Pradesh Border via Aland, Gulbarga, Malkhed, Sedam, Ribbanpally (Whagdhari-Ribbanpally road) in Gulbarga District.	141.2	242.75	LOA issued to M/s. GVR-RMN Pvt. Ltd., on 3 rd April 2010.
2	Improvements to Dharwad-Alnavar – Ramanagar – Anmod Road (SH-34)	60.4	237.60	4 th notification issued
3	Improvements to Chikkanayakanahalli – Tiptur – Hassan Road (Partly MDR and Partly SH)	74.00	241.76	LOA issued to M/s. GVR-RMN Pvt. Ltd., on 3 rd April 2010.

ROAD PROJECTS UNDER BOT - ANNUITY MODEL

Sl. No.	NAME OF THE PROJECT	LENGTH (IN KM)	AMOUNT (RS. IN CRORES)	REMARKS
1	Four laning of Bangalore - Mysore Road upto Maddur	62.00	475.20	completed
2	Improvements and widening of Hubli- Lakshmeshwar Road	43.00	266.70	Under progress

PROJECTS TENDERED UNDER DBFOT-TOLL MODEL

ROAD NAMES	PROGRAMME	LENGTH (IN KM)
Development of road from Kudalgi Sandur to Torangal.	DBFOT- Toll	45.65
Development of road from Sandur to Hospet.	DBFOT- Toll	27.00
Total length in Km		72.65

PROJECTS PROPOSED UNDER DBFOT-VGF MODEL

ROAD NAMES	PROGRAMME	LENGTH IN KM
Development of road from SH-58 near Chintamani -Tadgal cross- AP Border and Tadgal cross- Govinapalli -AP Border.	BOT-VGF-toll	57.50
Development of road from NH-63 near Ginigere-Gangavathi - Sindhanoor	BOT-VGF-toll	82.92
Development of road (SH-20)from Lingsugur- Kalmala- Raichur.	BOT-VGF-toll	90.00
Development of road (SH-13)from AP Border near Devsugur-Chikkasugur- Raichur-Yergera- Mantralaya bridge.	BOT-VGF-toll	57.64
Development of road from Shimoga- Honnalli-Harihara.	BOT-VGF-toll	77.50
TOTAL LENGTH IN KM		365.56

Challenges - Markets

- Projects already implemented
 - Difficult to implement sustainability
- New projects
 - Policies, frameworks and practices need faster development to catch up with the project delivery
 - Eco-efficiency/ Sustainability Rating systems required
- Pricing
 - Development of Trading system that recognises and prices the externalities
- Regulatory Systems to recognize Eco-efficiency/ sustainability

Challenges - Markets

- **Sustainable infrastructure market needs :**
- Supporting Policies
 - Need to go beyond Sector Policies to integrated policies
 - EF Vs BC targets - has to go down to sectors, infra projects and Industries
 - Framework for measurement and evaluation should be evolved
 - Strong automated Tracking mechanisms needed
 - **Mainstreaming** sustainability- Governance **DNA**
- Economic Signal through Incentives:
 - GoK relies on PPP for infra-build up
 - Financially difficult to recover the cost from user charges
 - Internalise Sustainability cost recovery
 - Private Sector as Partners in Governance

Challenges - Financing

- VGF funding
 - VGF funding does recognise sustainability costs
- EPC Vs PPP :
 - GoK agencies not going through PPP when the EPC option is available
 - Adopting Sustainability has to be for all projects/ sectors/state/ country
- Project financing need to **internalize externalities**